



MOVING YOU FURTHER

**22·25**  
**30B-9F**



Some photos may include optional features.

# Your satisfaction is our priority!

## Compact forklift with proven AC technology

Hyundai introduces the B-9F series 4 wheel battery forklift.

The B-9F series features excellent performance with enhanced control technology and reduced cost.



- More powerful performance - Dual drive
- Wet Disc Brake
- 3.5 inch LCD color monitor (including speedometer)
- Curve Control System
- Side Battery Extraction for easy change out (OPT)



Power & Performance

# High Efficiency & Optimal Performance

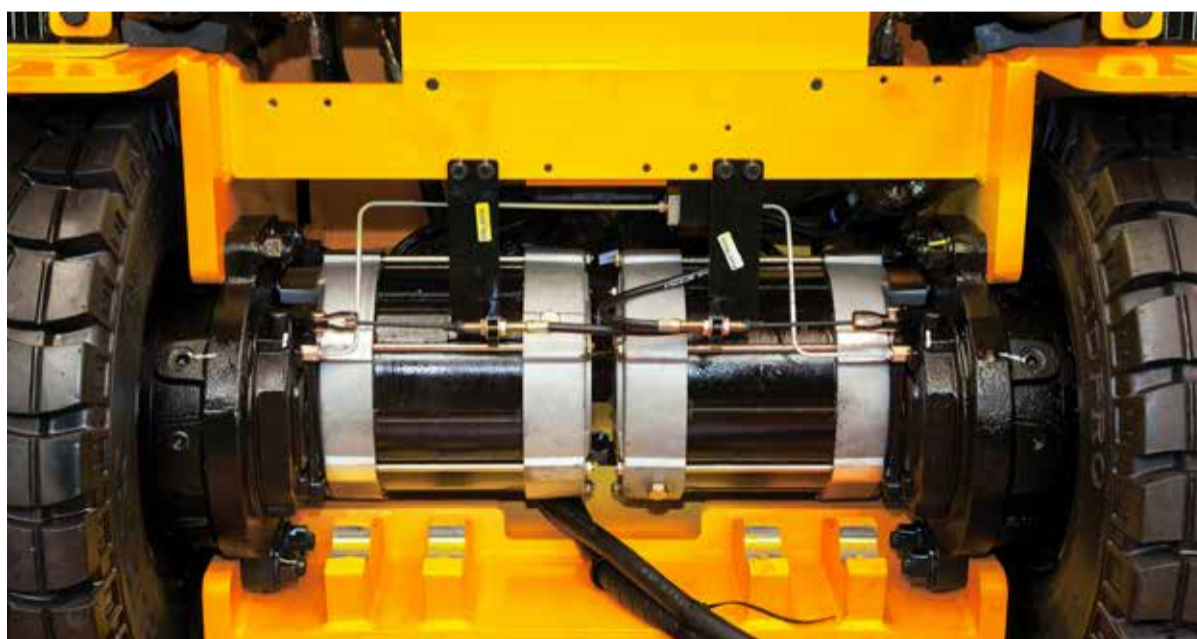
Efficient, smooth running and powerful performance make your work more productive.



Some photos may include optional features.

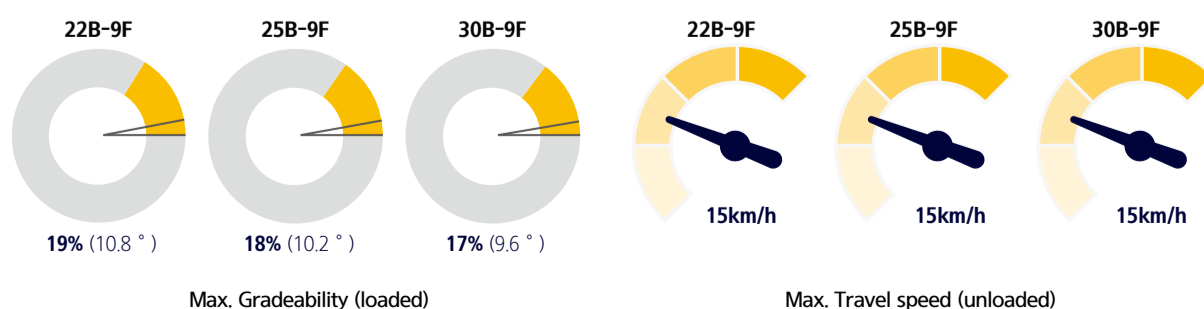
## Powerful driving force - Dual drive system

The dual drive system, which consists of two independently operating drive motors on the left- and right-hand sides, ensures excellent drawbar pull and short turning radius. It provides powerful performance when turning on a contaminated road surface. Also, it enhances the efficiency of logistics in a narrow workplace.



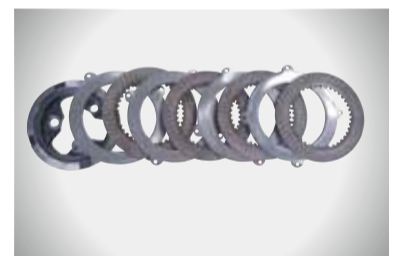
## Excellent gradeability and travel speed

It can perform stable operations and provide excellent gradeability and fast travel speed on any tough terrain or slope.



### Strong and economical AC motor

The enclosed drive and pump motor with AC technology combine power, high maintenance intervals and excellent durability. The brushless AC motors offer improved efficiency and reduction maintenance cost.



### Wet disk brake

The wet disk brake with semi-permanent lifespan can improve work efficiency with homogeneous braking power without overheating even in long repeated working conditions, and maintenance cost is relatively low due to no lining for regular replacement parts.



### Curve control

Curve Control limits travel speed based on turning radius for a smooth, precise turning operation for the driver.



### Vehicle Performance optimized for working condition

This function optimizes the performance of vehicle for the purpose of work, such as speed of operation, maximum working time and operator's proficiency. (High, Normal, Economy Mode)

### Quick and efficient loading/unloading

The combination of a 17KW large-capacity pump motor whose output is controlled in proportion to the amount of operation of the lift lever and a hydraulic pump enables unloading of cargo quickly and safely.

### Extension of battery life - Regenerative braking

When you take your foot off the pedal while driving, the drive motor changes its function to the generator. Charge the battery with the power generated at this time and increase the usage time. The electrical resistance of the motor during power generation also reduces the work fatigue and increases the service life of the brake system by stopping the equipment without operating the brake pedal.



Easy & Comfort

# Optimized Ergonomics & Fast and Easy Maintenance

An ideal arrangement of components ensures easy access and convenience for maintenance.

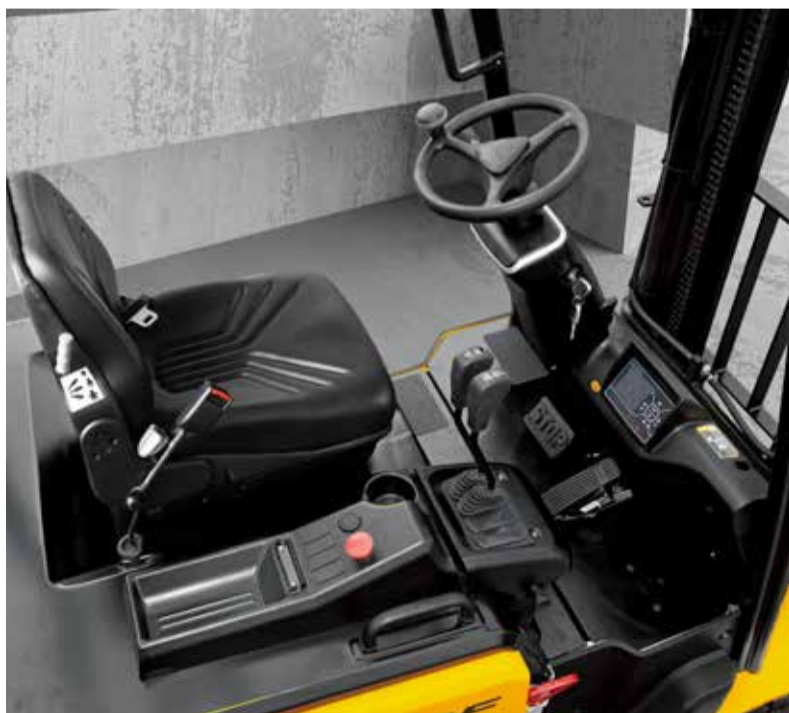


Some of the photos may include optional equipment.



## Spacious operating space

The ergonomically designed operating space was made for more space, a wider field of view and operator comfort. The smooth lever and pedal operation, adjustable tilting handle, suspension seat and multi-functional large-size cluster provide comfortable and efficient operation.



### Grammer Seat (OPT)

Easily adjustable suspension seat, based on a human engineering design, reduces operator fatigue and provides greater comfort.

- ELR(Emergency Locking Retractor) type seat belt as a standard
- Heat wire and head rest (OPT)

## 3.5 inch LCD color monitor

The LCD color monitor allows the operator to easily and efficiently control the machine. The monitor provides information about speed & accelerator level, steer angle & travel direction, battery discharge indicator, hour meter & working mode. The monitor also displays information about operation error, system fault, battery level, hour meter plus other various functions. It enables the operator to maintain the forklift in optimum operating condition.



### Main functions

- Steering wheel position and travel direction
- Turtle mode
- Speed (Digital)
- Battery discharge indicator
- High temp warning lamp
- Wrench warning light
- Roll up
- ESC
- Performance / Scroll right
- Scroll up
- Menu / Scroll Left
- Enter
- Turtle / Scroll down



### Optimized pedal position and floor mat

The position of accelerator and brake pedal have been optimized through human engineering.



### Steering wheel position

The steering angle sensor can be used to predict the traveling direction of the equipment by displaying the symbol in real time on the large screen of the cluster.



### Adjustable Tilting Handle

The steering column on the right can be easily adjusted by a lever.



### Improved battery maintenance

The battery cover is designed as a full open type to improve the maintenance. Also this is equipped with a gas spring system for safe and easy maintenance.



### Brake oil reservoir with level sensor

The enhanced brake oil reservoir, located in the upper left dash is equipped with an electronic level sensor and easily visible through the monitor.



Secure & Safety

# Advanced Safety

The safely designed driver's space makes your operating more comfortable.



Some of the photos may include optional equipment.

## Wide visibility for Safe Operation

The optimized lift cylinder array design provides a clear, wide field of vision for the operator. The adoption of a panorama mirror and rear camera(OPT) improve the rear side view, further enhancing safety.



**Strong overhead guard**

Exceeding ISO6055 regulations, the overhead guard offers great protection combined with excellent all around visibility.



**Panoramic mirror**

The panoramic mirror expands the driver's view when backing up.

### Maximum travel speed limitation

By considering the working environment, the maximum speed can be set and limited from 10 km/h to 1km/h unit through the cluster.

### Turtle Mode

When selecting the turtle mode while working in narrow and congested workplace, the travel speed is reduced at a preset speed.

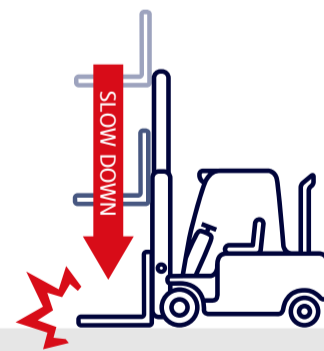
## Safety features

The adoption of a high-sensitivity sensor and advanced safety system can prevent the safety accidents.



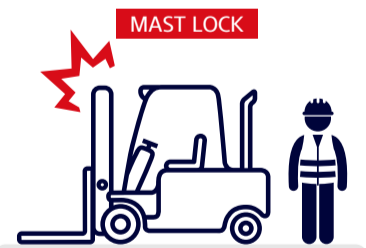
**Anti Roll back system**

Anti roll back system offers protection against the machine rolling back on a ramp in combination with exceptional ramp start capabilities.



**Fork safety features**

When the forks are being lowered, a down-control valve maintains the controlled speed. The down-safety valve prevents forks from dropping down in case of sudden damage of hydraulic line.



**Operator Presence Sensing System (OPT)**

When operator is not in seat the hydraulic lift and tilt controls and travel are locked out.



**Safety lamps**

LED combination lights and halogen headlights offer the driver visibility in all circumstances.

# New 9 Series Mast Specification

22/25/30B-9F

## 22B-9F



Mast Type	Maximum Fork Height	Overall Height (Lowered)	free lift height			Tilt Angle		Loading Capacity (500mm LC) w/o side shift	Loading Capacity (500mm LC) with side shift	Vehicle Weight (Unloaded)	
			W/ Load Backrest	W/o Load Backrest	W/o Load Backrest (3/4-SPOOL)	Fwd	Bwd				
			(mm)	(mm)	(mm)	(°)	(°)				
2-STAGE LIMITED FREE LIFT	※V300	3,005	2,012	115	115	115	6	10	2,200	2,200	3,943
	V330	3,305	2,162	115	115	115	6	10	2,200	2,200	3,965
	V350	3,505	2,262	115	115	115	6	10	2,200	2,200	3,979
	V370	3,705	2,412	115	115	115	6	10	2,200	2,200	4,001
	V400	4,005	2,562	115	115	115	6	10	2,200	2,200	4,023
	V430	4,305	2,712	115	115	115	6	6	2,200	2,200	4,072
	V450	4,505	2,862	115	115	115	6	6	2,200	2,175	4,102
	V470	4,705	2,962	115	115	115	6	6	2,200	2,125	4,116
	V500	5,005	3,112	115	115	115	6	6	2,150	2,075	4,138
2-STAGE FULL FREE LIFT	VF/VS295	2,976	2,012	832	1,379	1,379	6	6	2,200	2,200	3,990
	VF/VS325	3,276	2,162	982	1,529	1,529	6	6	2,200	2,200	4,023
	VF/VS345	3,476	2,262	1,082	1,629	1,629	6	6	2,200	2,175	4,045
3-STAGE FULL FREE LIFT	TF370	3,705	1,812	632	1,122	1,081	6	6	2,200	2,200	4,120
	TF400	4,005	1,912	732	1,222	1,181	6	6	2,200	2,200	4,141
	TF430	4,305	2,012	832	1,322	1,281	6	6	2,200	2,200	4,164
	TF450	4,505	2,112	932	1,422	1,422	6	6	2,200	2,175	4,185
	TF470	4,705	2,162	982	1,472	1,431	6	6	2,200	2,125	4,197
	TF500	5,005	2,262	1,082	1,572	1,531	6	6	1,560	1,530	4,222
	TF550	5,505	2,462	1,282	1,772	1,772	6	6	1,450	1,400	4,262
	TF600	6,005	2,662	1,482	1,972	1,972	6	6	1,380	1,260	4,301
	TF650	6,505	2,862	1,682	2,061	1,921	3	3	1,330	1,210	4,340
	TF700	7,005	3,062	1,882	2,261	2,121	3	3	1,100	980	4,377
	TS370	3,705	1,812	632	1,122	1,074	6	6	2,200	2,200	4,120
	TS400	4,005	1,912	732	1,222	1,174	6	6	2,200	2,200	4,141
	TS430	4,305	2,012	832	1,322	1,274	6	6	2,200	2,200	4,164
	TS450	4,505	2,112	932	1,422	1,422	6	6	2,200	2,175	4,185
	TS470	4,705	2,162	982	1,472	1,424	6	6	2,200	2,125	4,197
	TS500	5,005	2,262	1,082	1,572	1,524	6	6	1,560	1,530	4,222
	TS550	5,505	2,462	1,282	1,772	1,772	6	6	1,450	1,400	4,262
	TS600	6,005	2,662	1,482	1,972	1,972	6	6	1,380	1,260	4,301
	TS650	6,505	2,862	1,682	2,054	1,914	3	3	1,330	1,210	4,340
	TS700	7,005	3,062	1,882	2,254	2,114	3	3	1,100	980	4,377
4-STAGE FULL FREE LIFT	QF610	6,115	2,147	967	1,514	1,514	3	3	1,500	1,380	4,515
	QF660	6,615	2,347	1,167	1,714	1,714	3	3	1,300	1,180	4,575
	QF700	7,015	2,447	1,267	1,814	1,814	3	3	1,000	880	4,605
	QF745	7,465	2,597	1,417	1,964	1,937	3	3	700	580	4,651
	QF790	7,915	2,747	1,567	2,090	1,937	3	3	500	380	4,752

※ TF-Mast : Wide Visible 3-Stage Full Free Lift Mast with 1 Free Lift Cylinders.  
 ※ TS-Mast : Wide Visible 3-Stage Full Free Lift Mast with 2 Free Lift Cylinders.

※ : Standard

## 25B-9F



Mast Type	Maximum Fork Height	Overall Height (Lowered)	free lift height			Tilt Angle		Loading Capacity (500mm LC) w/o side shift	Loading Capacity (500mm LC) with side shift	Vehicle Weight (Unloaded)	
			W/ Load Backrest	W/o Load Backrest	W/o Load Backrest (3/4-SPOOL)	Fwd	Bwd				
			(mm)	(mm)	(mm)	(°)	(°)				
2-STAGE LIMITED FREE LIFT	※V300	3,005	2,012	115	115	115	6	10	2,500	2,500	4,138
	V330	3,305	2,162	115	115	115	6	10	2,500	2,500	4,160
	V350	3,505	2,262	115	115	115	6	10	2,500	2,500	4,174
	V370	3,705	2,412	115	115	115	6	10	2,500	2,475	4,196
	V400	4,005	2,562	115	115	115	6	10	2,500	2,425	4,218
	V430	4,305	2,712	115	115	115	6	6	2,450	2,375	4,267
	V450	4,505	2,862	115	115	115	6	6	2,400	2,325	4,297
	V500	5,005	3,112	115	115	115	6	6	2,350	2,275	4,333
	2-STAGE FULL FREE LIFT	VF295	2,976	2,012	832	1,379	1,379	6	6	2,500	2,500
VF/VS325		3,276	2,162	982	1,529	1,529	6	6	2,500	2,500	4,218
3-STAGE FULL FREE LIFT	TF400	4,005	1,912	732	1,279	1,279	6	6	2,500	2,425	4,336
	TF430	4,305	2,012	832	1,379	1,379	6	6	2,450	2,375	4,359
	TF450	4,505	2,112	932	1,479	1,479	6	6	2,400	2,325	4,380
	TF470	4,705	2,162	982	1,529	1,529	6	6	2,350	2,275	4,392
	TF500	5,005	2,262	1,082	1,629	1,629	6	6	1,880	1,850	4,417
	TF550	5,505	2,462	1,282	1,829	1,829	6	6	1,550	1,430	4,457
	TF600	6,005	2,662	1,482	2,029	2,029	6	6	1,400	1,280	4,496
	TF650	6,505	2,862	1,682	2,061	1,921	3	3	1,350	1,230	4,535
	TF700	7,005	3,062	1,882	2,261	2,121	3	3	1,150	930	4,572
	TS400	4,005	1,912	732	1,279	1,279	6	6	2,500	2,425	4,336
	TS430	4,305	2,012	832	1,379	1,379	6	6	2,450	2,375	4,359
	TS450	4,505	2,112	932	1,479	1,479	6	6	2,400	2,325	4,380
	TS470	4,705	2,162	982	1,529	1,529	6	6	2,350	2,275	4,392
TS500	5,005	2,262	1,082	1,629	1,629	6	6	1,880	1,850	4,417	
TS550	5,505	2,462	1,282	1,829	1,829	6	6	1,550	1,430	4,457	
TS700	7,005	3,062	1,882	2,254	2,114	3	3	1,150	930	4,572	
4-STAGE FULL FREE LIFT	QF610	6,115	2,147	967	1,413	1,462	3	3	1,600	1,480	4,710
	QF700	7,015	2,447	1,267	1,713	1,762	3	3	1,100	980	4,800
	QF745	7,465	2,597	1,417	1,964	1,762	3	3	800	680	4,846
	QF790	7,915	2,747	1,567	2,114	1,762	3	3	600	480	4,947

※ TF-Mast : Wide Visible 3-Stage Full Free Lift Mast with 1 Free Lift Cylinders.  
 ※ TS-Mast : Wide Visible 3-Stage Full Free Lift Mast with 2 Free Lift Cylinders.

※ : Standard

## New 9 Series

## 30B-9F



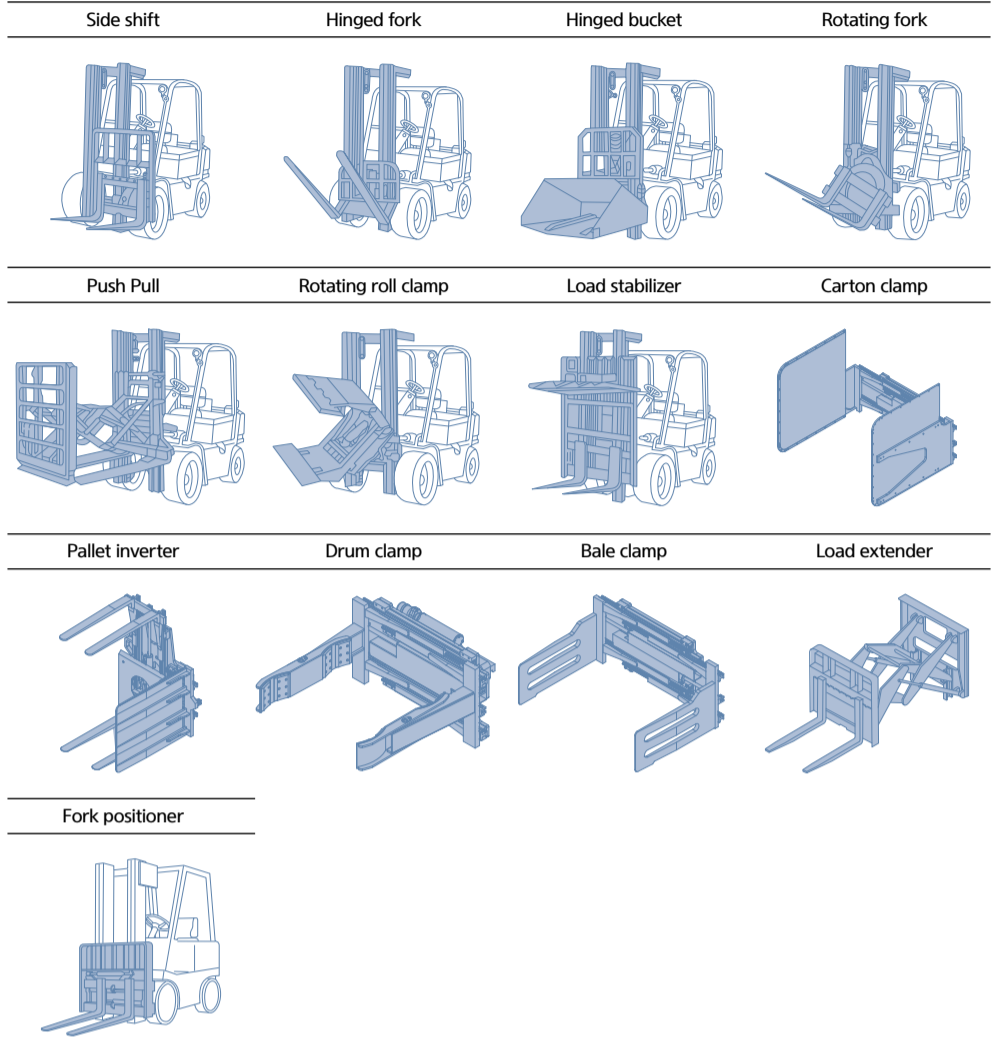
Mast Type	Maximum Fork Height	Overall Height (Lowered)	free lift height			Tilt Angle		Loading Capacity (500mm LC) w/o side shift	Loading Capacity (500mm LC) with side shift	Vehicle Weight (Unloaded)	
			W/ Load Backrest	W/o Load Backrest	W/o Load Backrest (3/4-SPOOL)	Fwd	Bwd				
			(mm)	(mm)	(mm)	(°)	(°)				
2-STAGE LIMITED FREE LIFT	※V300	3,005	2,012	115	115	115	6	10	3,000	3,000	4,585
	V330	3,305	2,162	115	115	115	6	10	3,000	3,000	4,604
	V350	3,505	2,262	115	115	115	6	10	3,000	3,000	4,621
	V370	3,705	2,412	115	115	115	6	10	3,000	3,000	4,643
	V400	4,005	2,562	115	115	115	6	10	3,000	3,000	4,665
	V450	4,505	2,862	115	115	115	6	6	3,000	2,950	4,743
	V500	5,005	3,112	115	115	115	6	6	2,900	2,775	4,780
2-STAGE FULL FREE LIFT	VF295	2,976	2,012	832	1,379	1,379	6	6	3,000	3,000	4,605
	VF/VS325	3,276	2,162	982	1,529	1,529	6	6	3,000	2,950	4,638
3-STAGE FULL FREE LIFT	TF400	4,005	1,912	732	1,217	1,181	6	6	3,000	3,000	4,772
	TF430	4,305	2,012	832	1,317	1,281	6	6	3,000	2,950	4,792
	TF450	4,505	2,112	932	1,417	1,417	6	6	3,000	2,875	4,819
	TF470	4,705	2,162	982	1,467	1,431	6	6	2,950	2,825	4,834
	TF500	5,005	2,262	1,082	1,567	1,531	6	6	2,250	2,180	4,860
	TF550	5,505	2,462	1,282	1,767	1,767	6	6	1,750	1,570	4,902
	TF600	6,005	2,662	1,482	1,967	1,967	6	6	1,450	1,270	4,942
	TF650	6,505	2,862	1,682	2,061	1,921	3	3	1,400	1,220	4,983
	TF700	7,005	3,062	1,882	2,261	2,121	3	3	1,200	1,020	5,023
	TS400	4,005	1,912	732	1,217	1,153	6	6	3,000	3,000	4,772
	TS430	4,305	2,012	832	1,317	1,253	6	6	3,000	2,950	4,792
	TS450	4,505	2,112	932	1,417	1,403	6	6	3,000	2,875	4,819
	TS470	4,705	2,162	982	1,467	1,403	6	6	2,950	2,825	4,834
	TS500	5,005	2,262	1,082	1,567	1,503	6	6	2,250	2,180	4,860
	TS550	5,505	2,462	1,282	1,767	1,753	6	6	1,750	1,570	4,902
	TS600	6,005	2,662	1,482	1,967	1,953	6	6	1,450	1,270	4,942

### Optional Items

- Fork(mm)  
22/ 25B-9F : 900/1,000/1,050(STD)/1,200/1,350/1,500/1,650/1,800/2,100  
30B-9F : 900/1,050(STD)/1,150/1,200/1,350/1,500/1,650/1,800/1,970/2,120/2,300/2,400
- INTEGRAL SIDE SHIFT, FORK POSITIONER, INTEGRAL FORK POSITIONER SIDE SHIFT
- SEAT : Semi suspension seat (STD) Full suspension seat  
(Armrest, Heating, Buckle S/W)
- TIRE : Solid(standard) / Non-marking/ Pneumatic
- Cold Storage : It can be applied in -30° working environment.
- M.C.V : 2-Spool (STD), 3-Spool, 4-Spool
- Any and all lamps are optional
- Side Mirror
- OPSS : Mast

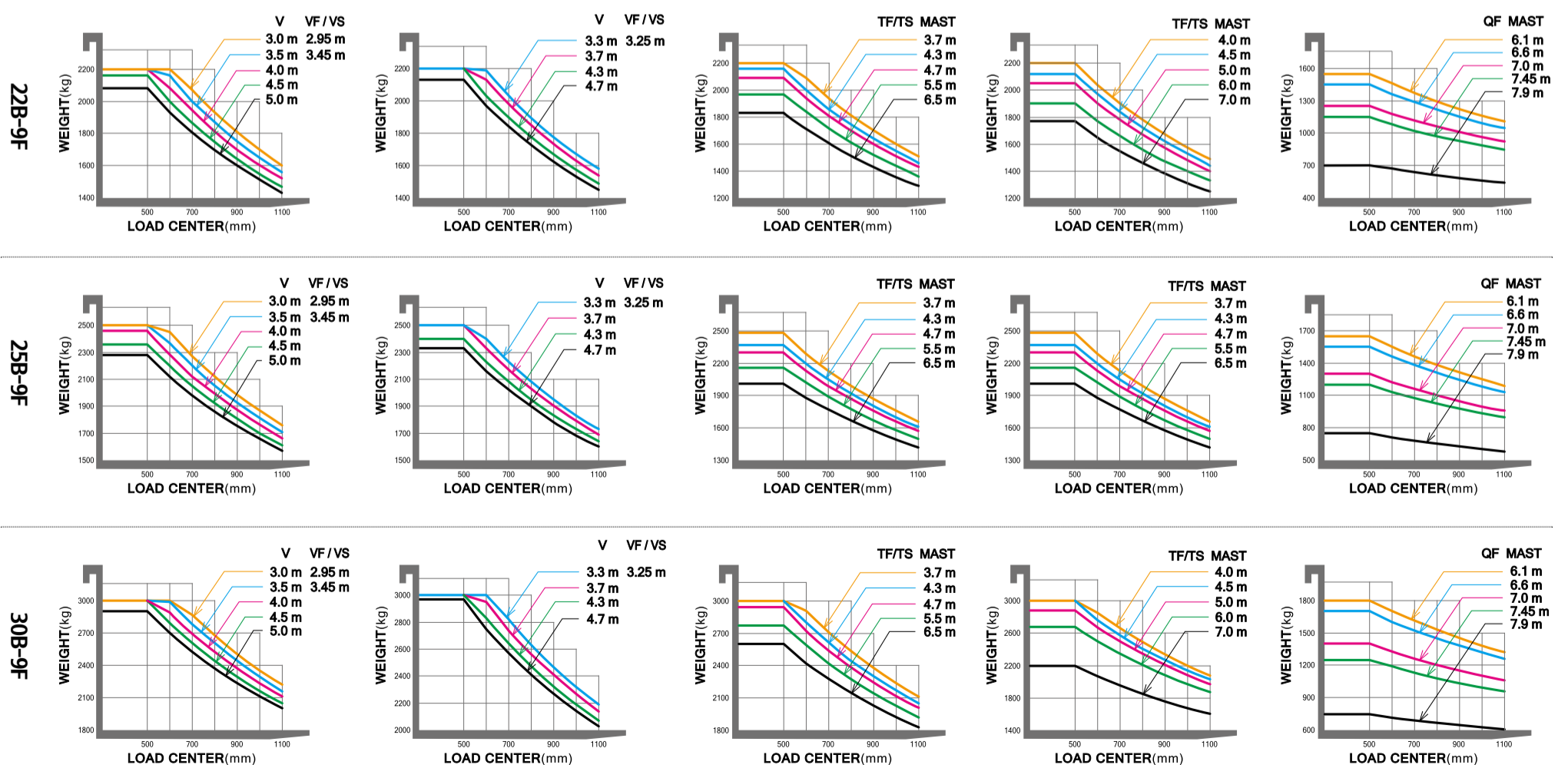
\* All specifications and photos in this catalog are subject to change for quality improvement.

### Attachments



## New 9 Series

### Load Capacity

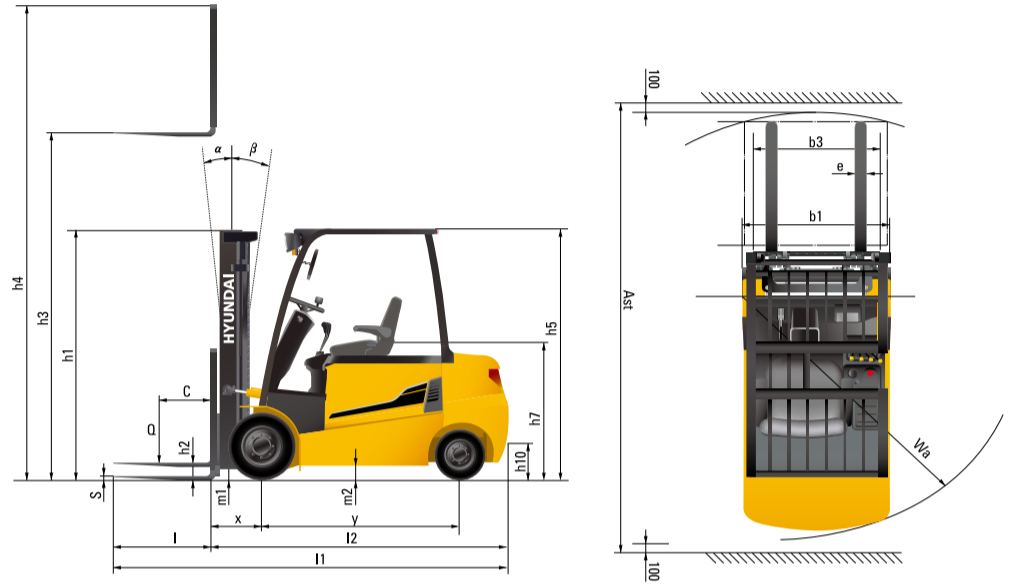


## Specification

Distinguishing mark					
1.1	Manufacturer (abbreviation)	Hyundai			
1.2	Manufacturer's type designation	22B-9F	25B-9F	30B-9F	
1.3	Drive	Electric (battery or mains)	Electric (battery or mains)	Electric (battery or mains)	
1.4	Type of operation	Seat type			
1.5	Load capacity / rated load	kg	2,200	2,500	3,000
1.6	Load center distance	c mm	500	500	500
1.8	Load center distance	x mm	458	458	458
1.9	Wheelbase	y mm	1,400	1,400	1,600
Weight					
2.1	Service weight	kg	3,935	4,199	4,573
2.2	Axle loading, loaded front/rear	kg	5,368 / 797	5,836 / 824	6,630 / 974
2.3	Axle loading, unloaded front/rear	kg	1,663 / 2,302	1,625 / 2,535	1,834 / 2,770
Tires, chassis					
3.1	Tires : Solid rubbe(V), Superelastic(SE), Pneumatic(P),Polyurethane (PE), Non marking (N)		SE, P	SE, P	SE, P
3.2	Tire size, front		23x9-10	23x9-10	23x9-10
3.3	Tire size, rear		18x7-8	18x7-8	18x7-8
3.5	Wheels, number front / rear (x = driven wheels)		2x / 2	2x / 2	2x / 2
3.6	Tread, front	mm	993	993	993
3.7	Tread, rear	mm	980	980	980
Dimensions					
4.1	Tilt of mast/fork carriage forward/backward	degrees	6 / 10	6 / 10	6 / 10
4.2	Height, mast lowered	h1 (mm)	2,012	2,012	2,012
4.3	Free lift	h2 (mm)	115	115	115
4.4	Lift height	h3 (mm)	3,005	3,005	3,005
4.5	Height, mast extended	h4 (mm)	4,185	4,185	4,185
4.7	Height of overhead guard (cabin)	h5 (mm)	2,230	2,230	2,230
4.8	Seat height / stand height rel. to sip	h7 (mm)	1,275	1,275	1,275
4.12	Coupling height	h10 (mm)	325	325	325
4.19	Overall length	l1 (mm)	3,345	3,345	3,553
4.20	Length to face of forks	l2 (mm)	2,295	2,295	2,503
4.21	Overall width	b1 (mm)	1,200	1,200	1,200
4.22	Fork dimensions ( l x w x t )	l x e x s (mm)	45x100x1,050	45x100x1,050	45x122x1,050
4.23	Fork carriage iso 2328		II/A	II/A	III/A
4.24	Fork-carriage width	b3 (mm)	1,102	1,102	1,102
4.31	Ground clearance, below mast, loaded	m1 (mm)	117	117	117
4.32	Ground clearance, center of wheelbase	m2 (mm)	130	130	130
4.34.1	Aisle width for pallets (1,000x1,200)	Ast (mm)	3,637	3,637	3,829
4.34.2	Aisle width for pallets (800x1,200)	Ast (mm)	3,803	3,803	4,009
4.35	Turning radius	Wa (mm)	1,939	1,939	2,150

Performance data					
5.1	Travel speed, unloaded	km/h	15	15	15
5.2	Lift speed, loaded / unloaded	mm/s	350 / 500	340 / 500	290 / 400
5.3	Lowering speed, loaded / unloaded	mm/s	500 / 270	500 / 270	500 / 270
5.6	Max. drawbar pull, loaded / unloaded	N	12,640 / 12,530	12,640 / 12,460	12,490 / 12,430
5.8	Gradeability, loaded / unloaded	% (°)	19 (10.8)	18 (10.2)	17 (9.6)
5.10	Service brake		Hydraulic	Hydraulic	Hydraulic
Motors					
6.1	Drive Motor, 60 Min Rating	kW	4.7x2	4.7x2	4.7x2
6.2	Hydraulic Motor, 15% Rating	kW	17	17	17
6.4	Battery voltage / Rating capacity	V/Ah	48 / 600	48 / 600	48 / 660
6.5	Battery weight	kg	1,020	1,020	1,150
6.7	Battery compartment dimension (L/W/H)	mm	1,035 / 806 / 535	1,035 / 806 / 535	1,035 / 1,000 / 535
Addition data					
8.1	Type of drive control		AC	AC	AC

## Dimension



\* All specifications in this catalog are subject to change according to the optional items.

# MEMO



